



Webinar: Integrating sustainable purchasing into your health system

August 11, 2020



PRACTICE
Greenhealth®



Copyright Materials

This presentation is protected by US and International Copyright laws. Reproduction, distribution, display and use of the presentation without written permission of the speaker is prohibited.

© Practice Greenhealth 2020

Learning objectives

By the end of
this webinar
you will learn:



Panelists



Mary Larsen

Environmental Affairs and Sustainability Director
Advocate Aurora Health



Elizabeth Eldridge

Director of Sustainable Sourcing
Kaiser Permanente



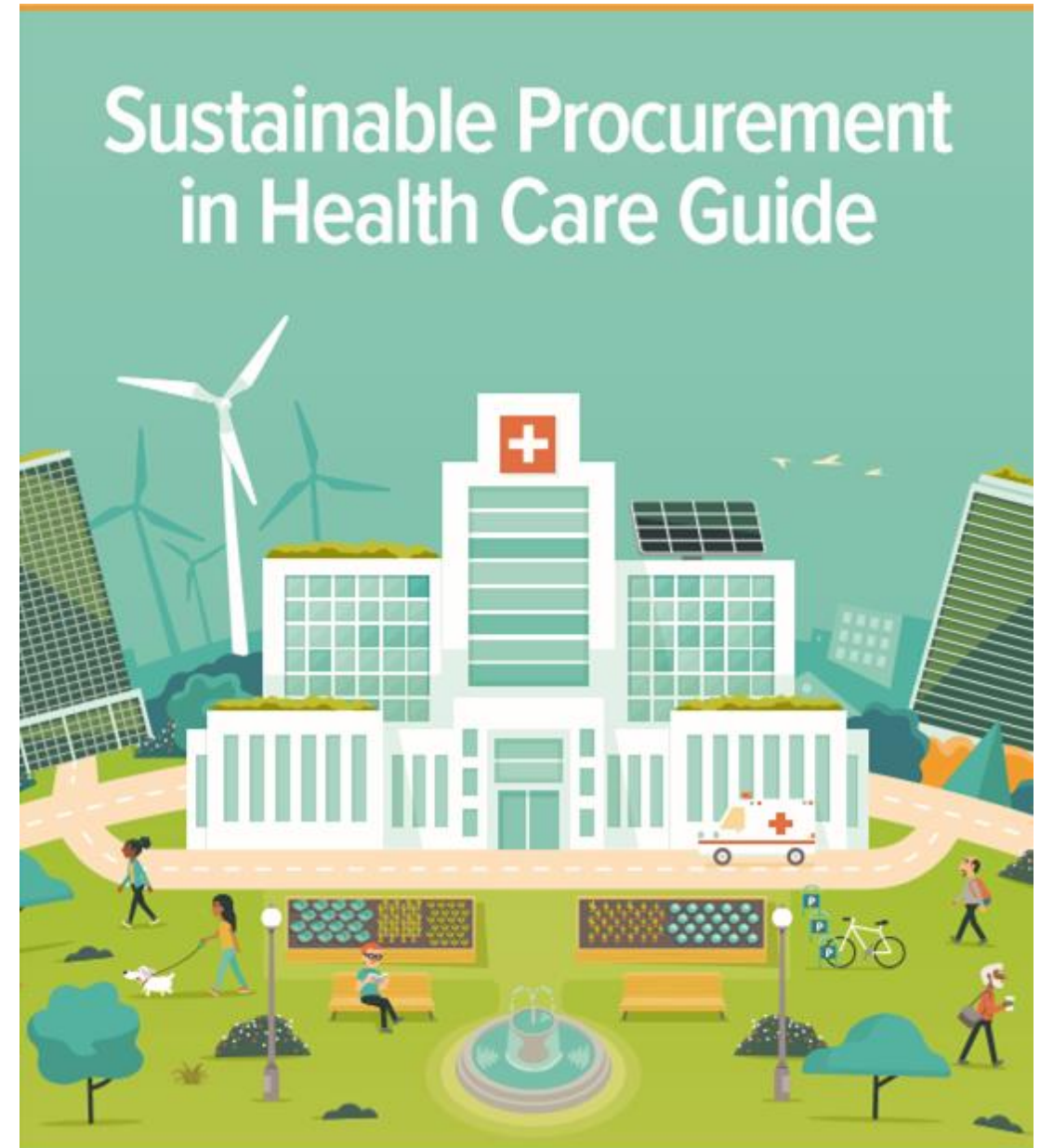
Beth Eckl

Director, Environmental Purchasing Program
Practice Greenhealth

Groundbreaking new guide!

- Provides step-by-step guidance, tools and resources to develop a sustainable purchasing strategy
- Prioritizes community and environmental health and safety while reducing costs
- Available to Practice Greenhealth members

<http://practicegreenhealth.org/sustainableprocurementguide>



Guide structure | PDCA

- Follows PDCA four-step management method
- The best practices that every program should have are incorporated into each part of the framework





10 Key Elements

10 key elements | Sustainable procurement program

HealthCare
TRANSITION

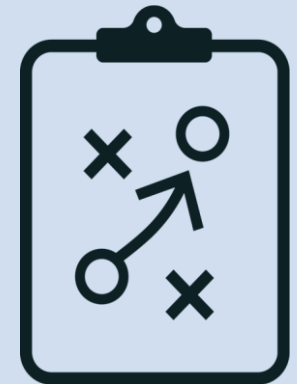


10 key elements | PLAN



PLAN

Strategy



Key elements | PLAN (cont.)

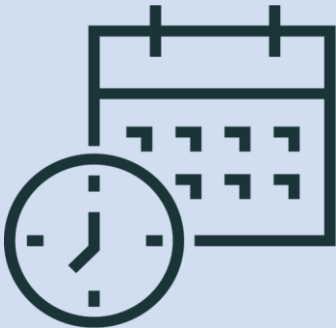


FIGURE 5: SAMPLE SUPPLY CHAIN WORK PLAN (HEALTHPARTNERS)

| ENERGY | | | | |
|--|----------|---------|--|------------|
| Ensure Energy Efficiency | | | | |
| <ul style="list-style-type: none">Develop an enterprise wide perspective on energy managementPrioritization of projects that include energy efficiency components and that have a positive return on investment in a reasonable timeframe | | | | |
| DIMENSION DRIVER AND TACTICS | OWNER(S) | TIMING | STATUS | COMPLETED |
| Community Solar Garden Subscription Agreements | Vini | Ongoing | <ul style="list-style-type: none">At the end of 2016: 20 million kWh/yr committed toFacilities include: Methodist Hospital, Inver Grove Clinic, Lakeview Hospital, and WestfieldsSigned an agreement for Regions Hospital for 11,413,000 kWh/yrSigned an agreement for Curve Crest clinic for 500,000 kWh/yrAt the end of 2017: 33,660,833 kWh/yr committed to | 12/31/2017 |
| Conduct fleet vehicle assessment to identify opportunities to reduce greenhouse gas emissions (rechargeable batteries, switching to gasoline | Bob S. | | <ul style="list-style-type: none">Purchased one Nissan Leaf for TRIA East. This EV will be used for daily deliveries form Woodbury Clinic. | 12/1/2017 |

PLAN

Action plan



Key elements | PLAN (cont.)

HealthCare

Sample high-impact procurement opportunities

Practice Greenhealth and Health Care Without Harm have identified high-impact procurement opportunities based on input from a wide range of health care organizations. “High-impact” means the category can play a significant role in the health and safety of patients, staff, and the environment. The list is not in priority order; it is sorted by the primary topic, though many topics may be applicable to each category.

For additional ideas, see Practice Greenhealth’s [sustainable procurement directory](#), which lists 120 prioritized product categories. The list is not in priority order, it is sorted by the primary topic: Climate Change, Safer Chemicals, Resource Conservation and Food. Many topics may be applicable to each category.

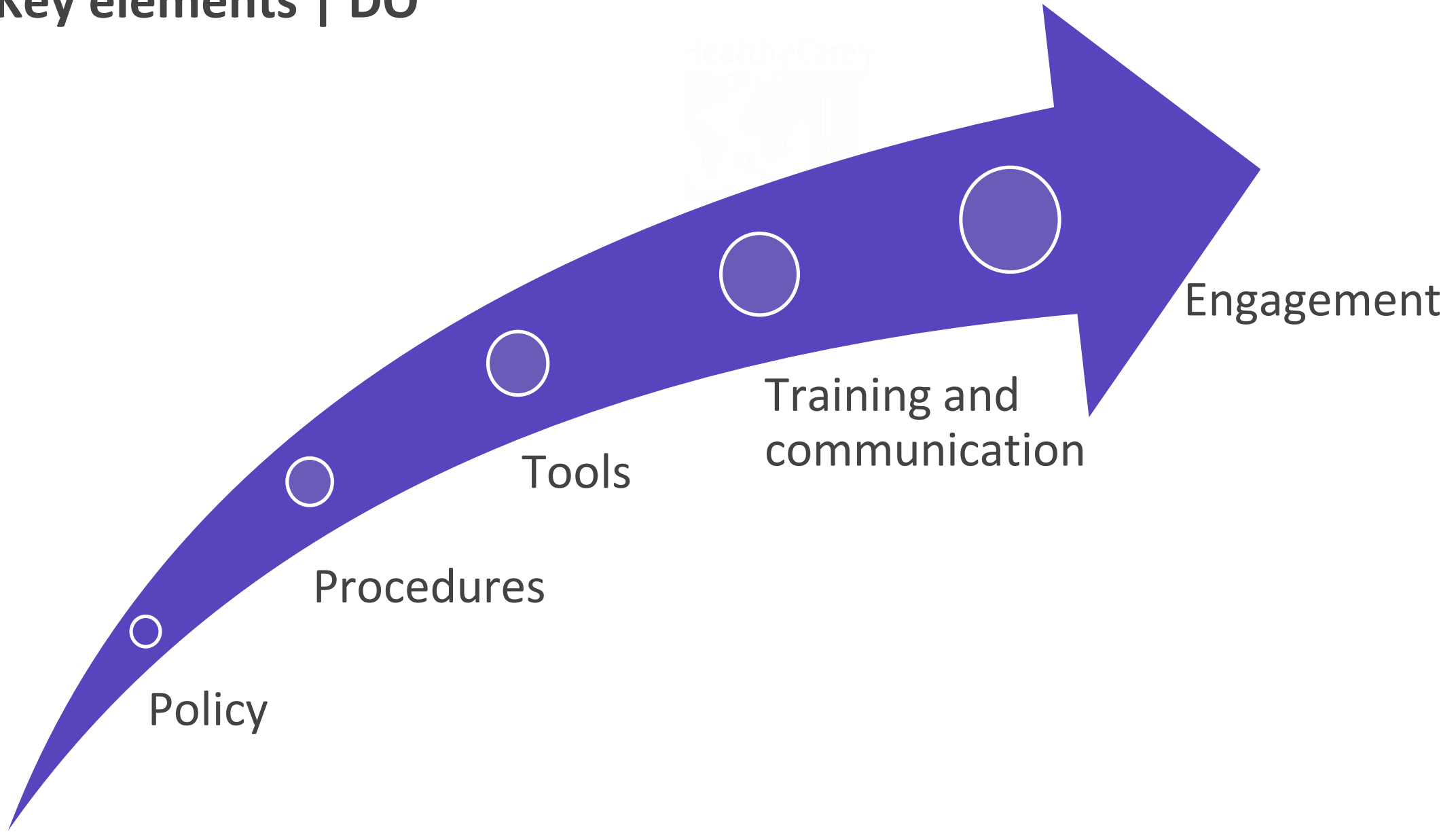
| # | PROCUREMENT CATEGORY | SUSTAINABLE ALTERNATIVES | SUSTAINABILITY GOALS, MEASURES (WHEN APPLICABLE), RESOURCES |
|---|------------------------------|--|--|
| CLIMATE CHANGE: GREENHOUSE GAS REDUCTION: REDUCE GHG EMISSIONS BY 45% BY 2030; CARBON NEUTRAL BY 2050 | | | |
| 1 | Renewable energy | Renewable electricity | 100% renewable electricity by 2030. Greenhouse gas reduction toolkit |
| 2 | Air conditioning and cooling | Energy-efficient, low hydro- fluorocarbons (HFC) cooling | Reduce GHG emissions from HFCs in air conditioning and improve energy efficiency by decreasing weather-adjusted energy intensity from metered energy use by ten percent from baseline over a five year period. |

PLAN

High-impact procurement opportunities list



Key elements | DO



Key elements | CHECK



CHECK

Tracking and
monitoring



Key elements | ACT

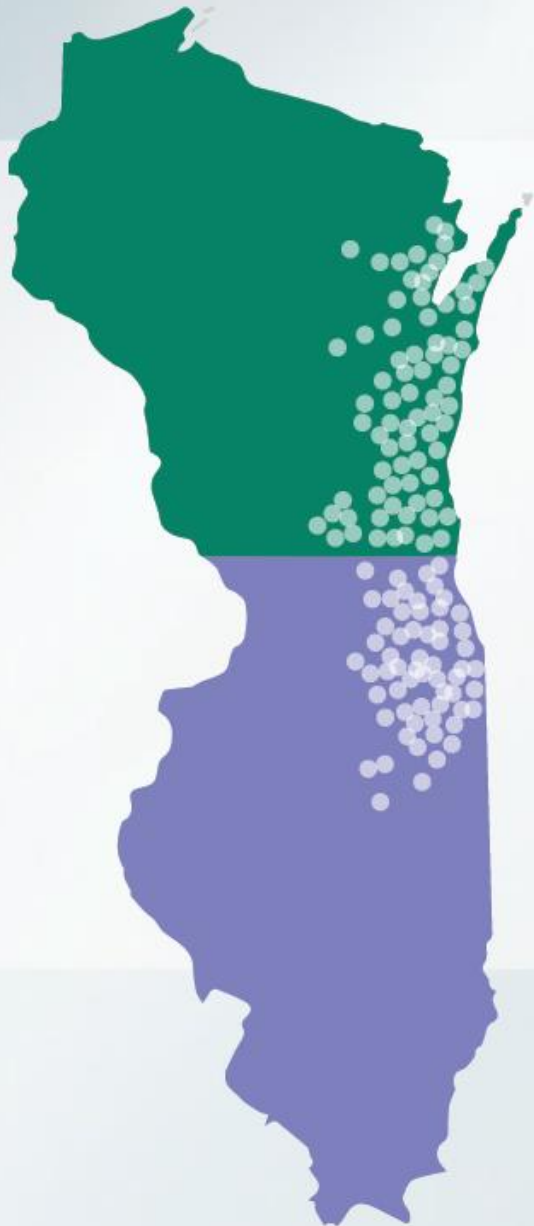


ACT

Reporting







Integrating sustainable purchasing into your health system

Greenhealth Academy Webinar

08.11.20 | Mary Larsen, MS

Director, Environmental Affairs and Sustainability

Overview

- Introduction to AAH
- Sustainable Procurement in Healthcare
- EPP Priorities and Setting Goals
- Accountability and Reporting
- Wins and Opportunities



Reimagining Health. Transforming Care.

We are now part of something bigger. Something extraordinary. Two national leaders together as one, helping millions of people live well with unsurpassed access to world-class care.

AdvocateAuroraHealth



Mary Larsen
Director,
Environmental Affairs and Sustainability

500

Sites of Care

Creating new possibilities in our communities

8,100+

Physicians

Providing integrated access to world-class specialists

70,000

Team Members

Impacting lives every day as champions of wellness

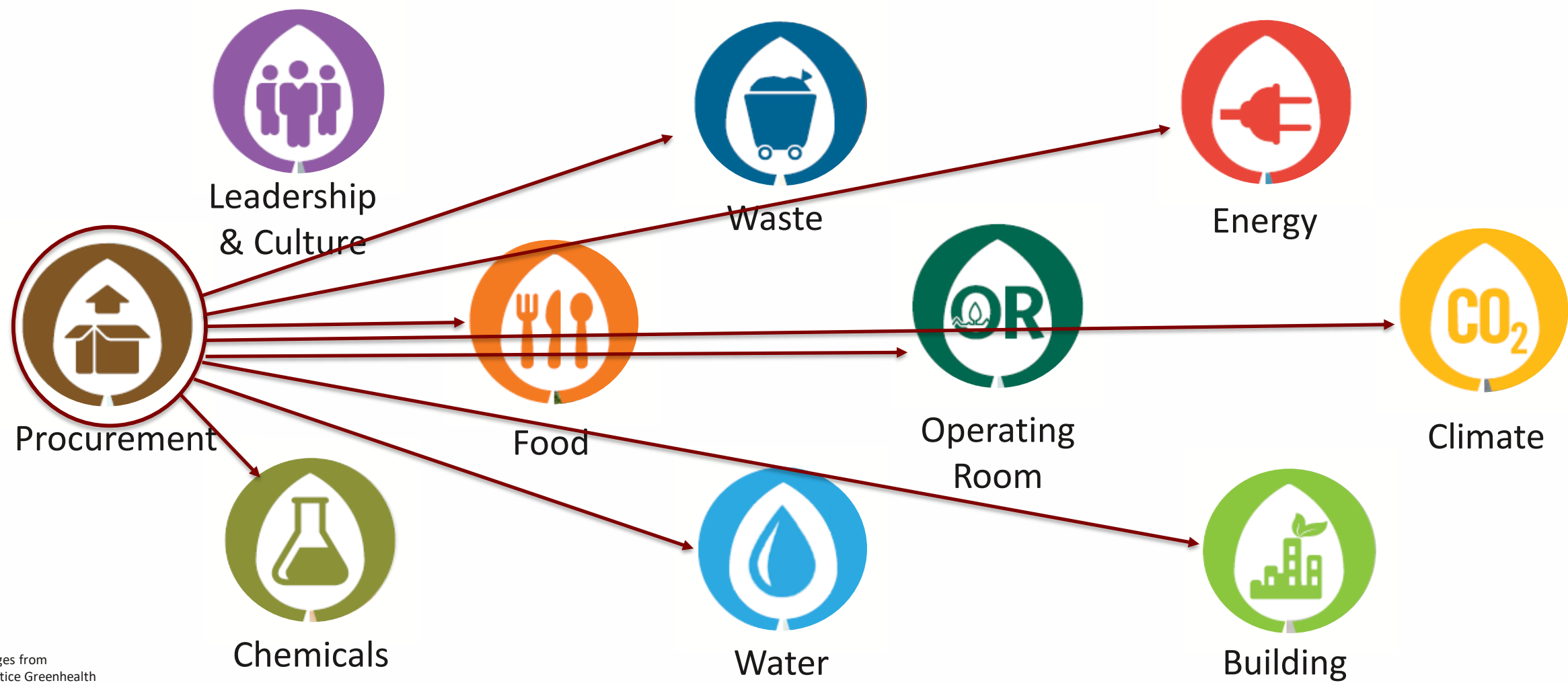
Helping People Live Well

- Healthy Planet – Healthy People
- Culture of conservation and wellness
- Responsible corporate citizen
- Public and community health
- Attracting and retaining the best talent
- Market transformation



Sustainable Procurement in Health Care

What We Buy Matters



Images from
Practice Greenhealth

Health Care Buyer Beware

EPA has been able to require testing on just 200 of the more than 80,000 chemicals produced and used in the U.S.

Growing number of disposable products

Antibiotics and hormones in meat

Voluminous packaging materials

Energy and water intensive products

Hazardous waste disposal at end of life

THE PLAN-DO-CHECK-ACT CYCLE (PRACTICE GREENHEALTH)



Framework for Priorities



Metrics For Success: Smarter Purchasing Measure Details

Surgical Kit Review



Review & reformulate (where appropriate) at least 80 percent of total O.R. kit types.

Single Use Device Reprocessing



Collect and purchase 20 percent reprocessed non-invasive devices compared to total.

Greener Electronics



Specify, purchase, and report expenditures on greener electronics with a goal of 80 percent registered with EPEAT.

Metrics For Success: Safer Chemicals Measure Details

Green Cleaning



Inventory cleaning products & purchase 90% Green Seal or UL ECOLOGO certified cleaning products in the following categories: carpet, window, all purpose, bathroom, & general floor care.



PVC & DEHP Elimination

Eliminate PVC and DEHP from at least two product categories.

Healthy Interiors



Ensure that 30 percent of the annual volume of furnishings and furniture purchases (based on cost) eliminate the use of formaldehyde, perfluorinated compounds, (PVC), antimicrobials, and all flame retardants.



Mercury Elimination

Achieve mercury-free status or develop and implement mercury elimination plan.

Furniture and Furnishings



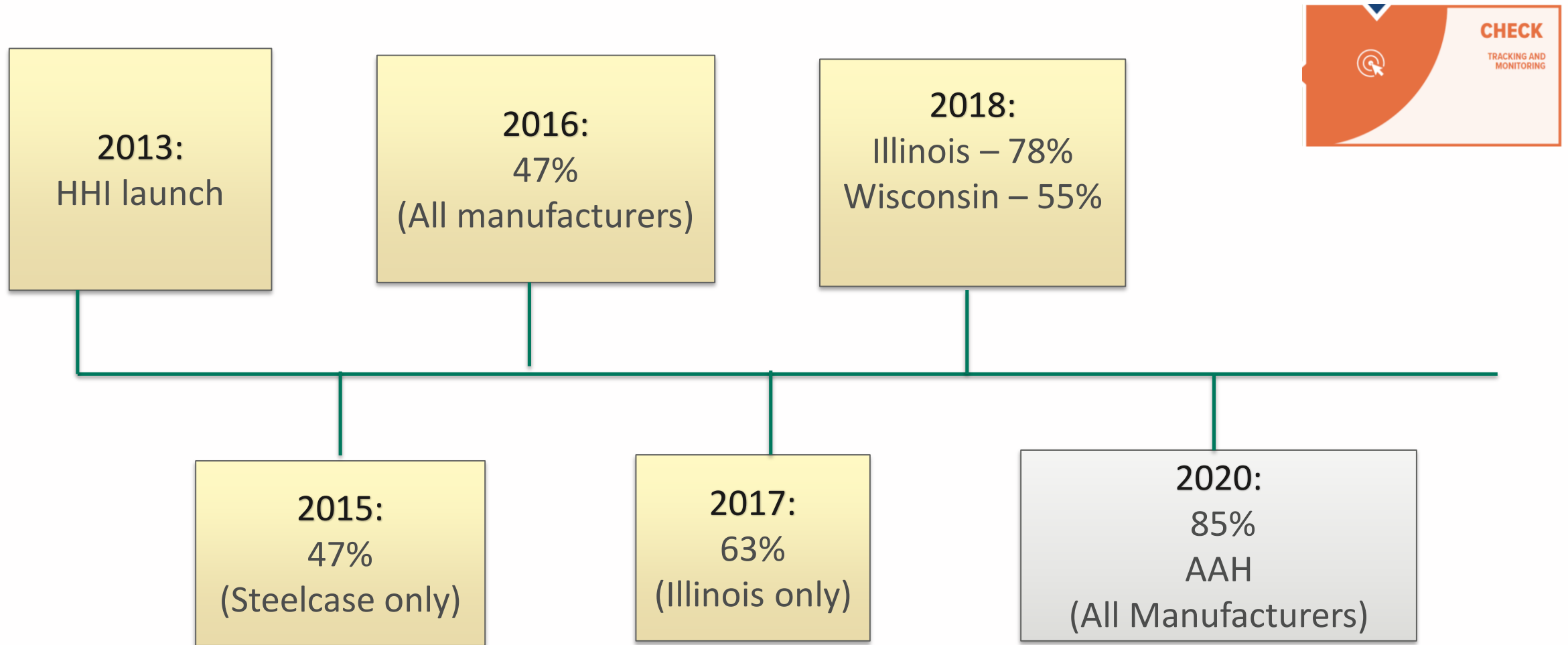
Procurement strategy

- ✓ Educated leadership
- ✓ Established new furniture standard
- ✓ Introduced new purchasing criteria to prime suppliers
- ✓ Steelcase developed custom catalog of HHI compliant furniture for interiors team
- ✓ Enforced furniture standards

Outcomes

- Increased transparency
- Cost neutral
- Market Transformation

Furniture & Furnishings

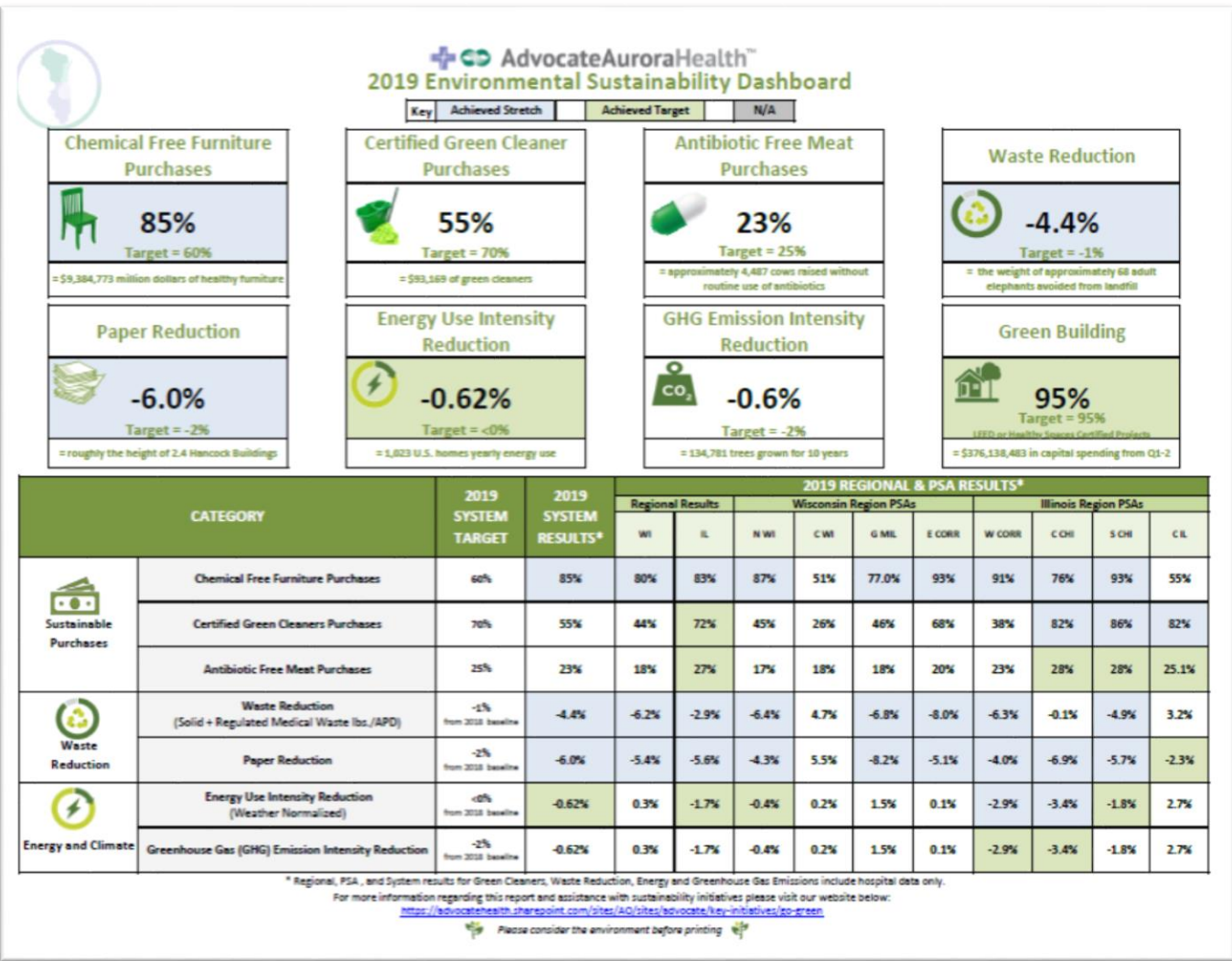


Dashboard Evolution



| 2014 Healthy Environment Index | | | | | |
|--------------------------------|---|--------|--------|----------|-------|
| Key Result Area | Measure | Target | Actual | Achieved | Ratio |
| Funding our Future | Energy Utilization | -2% | -3.5% | ★ | 4 |
| | Solid + Medical Waste (lbs/APD) | 16.89 | 16.68 | ★ | 4 |
| | C & D Recycling | 85% | 94% | ★ | 5 |
| | Reprocessing Savings | 90% | 77% | | 1 |
| Quality | Paper Reduction | -4% | -3% | | 2 |
| | Green Cleaners | 90% | 83% | | 2 |
| Service | Healthy Beverages | 25% | 48% | ★ | 5 |
| | Health Environment Events | 8 | 19 | ★ | 5 |
| | Screenings | 70% | 58% | | 1 |
| | Earned incentives <small>*Based on highest cost medical plan</small> | 45% | 80%* | ★ | 5 |
| Health Environment Index YTD | | | | | 3.7 |

| 2017 Q3 Sustainability & Supplier Diversity Dashboard | | | | |
|---|--|---|---|--|
| True North Metrics | | | | |
| Safety | Community Benefit | | Cost | |
| Safety Composite | Supplier Diversity | Associate Engagement | Greenhouse Gas Emissions | Sustainable Operations Cost |
| 80 | 6 | 87 | 24.0 | \$22.58 |
| Composite Score Baseline: 65 Target: 80 Stretch: 100 | % of SDFIT/Cons* spend Baseline: 6 Target: 7 Stretch: 8 | Composite Score Baseline: 72 Target: 80 Stretch: 100 | kg CO ₂ / square foot Baseline: 24.6 Target: 24.1 Stretch: 23.9 | per adjusted patient day Baseline: \$22.81 Target: \$22.58 Stretch: \$22.35 |
| <small>*Supplies, drugs, food, information</small> | | | | |

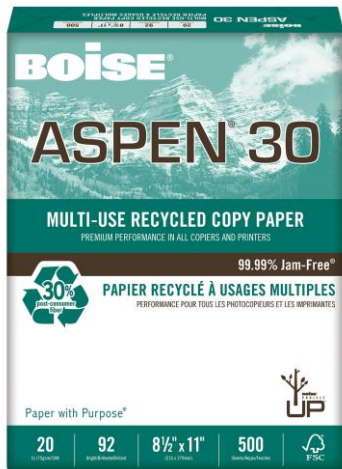


Supply Chain Education

- Integrate Sustainable Criteria into Sourcing and Logistics decisions
 - Less resource intensive
 - Less polluting
 - Less harmful to human and environmental health
 - Supplier Corporate Social Responsibility
- Engage suppliers and GPO
 - Chemicals transparency, regrettable substitutions
 - End of life burden
 - Life cycle costs
 - Reduce material and hazardous waste



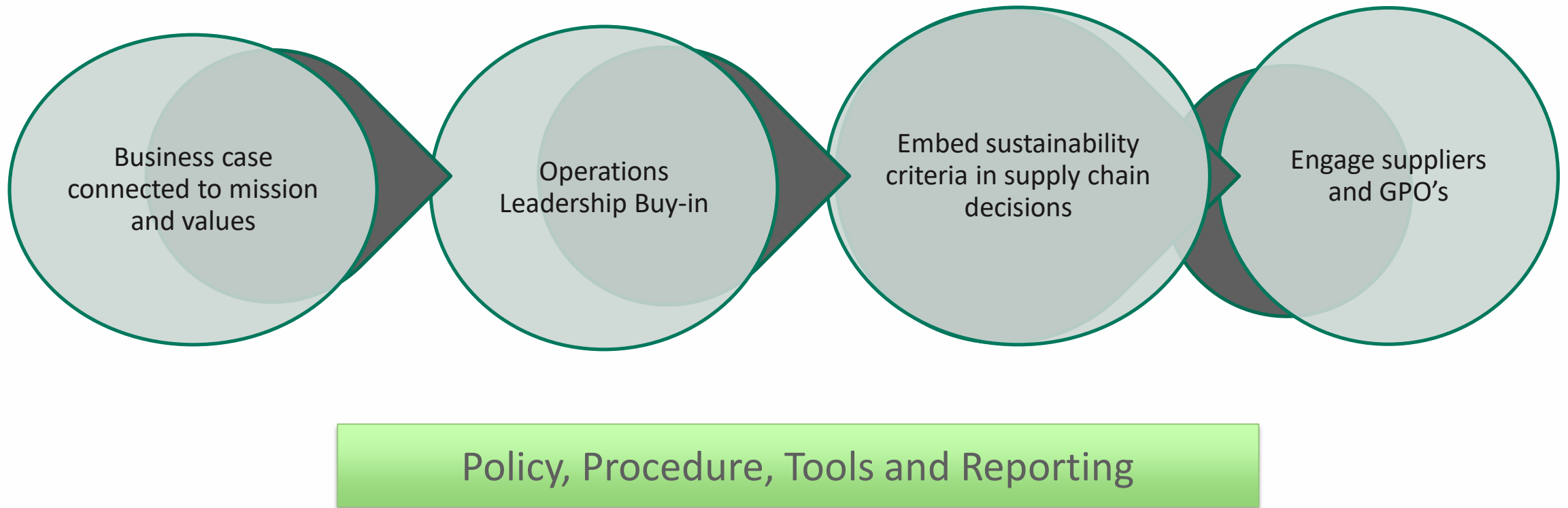
Sustainability Wins



Supply Chain and.....

- PVC and DEHP free medical products – Clinical team
- Sustainable food – Food & Nutrition
- Single Use Device Reprocessing strategy – Multi disciplinary team
- Waste management and diversion – Environmental Services
- Compostable cups and serve ware – Food & Nutrition
- Green Cleansers – Environmental Services

Executing on Priorities



SUSTAINABLE PROCUREMENT

Elizabeth Eldridge
Director of Sustainable Sourcing
August 2020

KP's 2025 Environmental Stewardship Goals

Our Sustainability Framework



CLIMATE ACTION

Become "carbon net positive" by buying enough clean energy and carbon offsets to remove more greenhouse gases from the atmosphere than we emit.



SUSTAINABLE FOOD

Buy all of our food locally or from farms and producers that use sustainable practices, including using antibiotics responsibly.



WASTE REDUCTION

Recycle, reuse or compost 100% of our non-hazardous waste.



WATER CONSERVATION

Reduce the amount of water we use by 25% per square foot of buildings.



SAFER PRODUCTS

Increase our purchase of products and materials meeting environmental standards to 50%.



COLLABORATION

Pursue new collaborations to reduce environmental risks to foodsheds, watersheds and air basins supplying our communities.



SUSTAINING SUSTAINABILITY

Meet international standards for environmental management at all of our hospitals.

Our Path to Sustainable Procurement

Policy

Contract
Language

Data
Collection

Supplier
Innovation

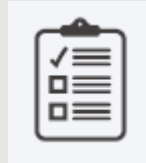
Sustainable
Product
Achievement

Our Sustainable Procurement Strategy

Key Elements



- Linked to our corporate mission and strategy
- Commitment of leadership and stakeholders
- Imbedded in the sourcing process



- Sustainable Procurement Policy
- EPP Standard (Chemicals of Concern & Waste Criteria)



- Measurement
- Accountability

Sustainable Procurement

Key Considerations

- How does sustainable procurement tie into your organization's mission?
- Who are the key stakeholders that can help drive change?
- Where can you have the most impact?
- What does success look like?

Get involved

Affiliate Partner

From the definition “to officially attach or connect to an organization”. Affiliate partners are manufacturers, suppliers, service providers, or other supply chain partners. As a key player in the supply chain, your partnership and collaboration is paramount to our work.

Allied Partner

From the definition “to side with or support”. Allied partners are NGOs, government agencies, or other organizations. As an allied partner, we want you to be aligned with our mission, resources, and efforts to advance sustainability.

Academic Partner

Given its primary role as knowledge producer, higher education can serve as a powerful means to help create a more sustainable future. The academic partner level is open to any university, college, or graduate school, most likely nursing schools, medical schools, and schools of public health. When an institution invests in Practice Greenhealth, we are nurturing the leaders of tomorrow

For more information, please email join@practicegreenhealth.org

Questions and Answers



Mary Larsen
Environmental affairs and sustainability director
Advocate Aurora Health
mary.larsen@aah.org



Elizabeth Eldridge
Director of sustainable sourcing
Kaiser Permanente
elizabeth.a.eldridge@kp.org



Beth Eckl
Director, Environmental Purchasing Program
Practice Greenhealth
beckl@practicegreenhealth.org

